

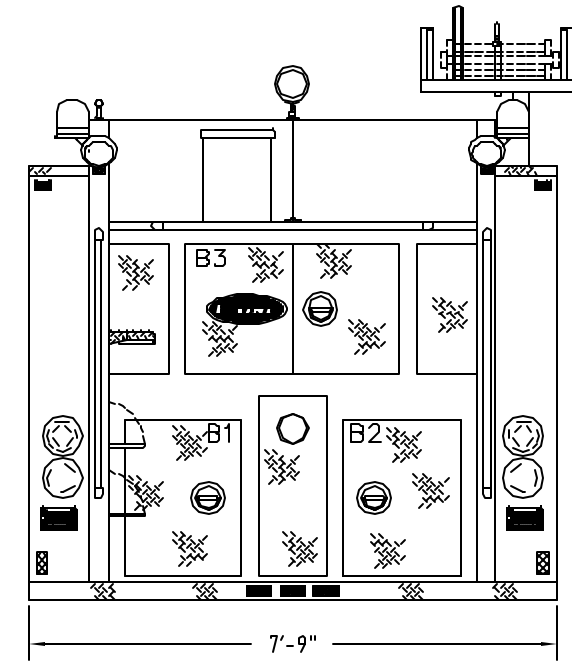
E-ONE
OCALA, FL
SO.000000
VT04 TRADITION PUMPER
FREIGHTLINER M2 4DR

1250 GPM HALE QFLO PUMP	HOSELOAD:
1000 GALLON WATER TANK	NFPA COMPLIANT

COMPT.	OPENING		INTERIOR DIMENSION		
L1	34W	68H	34W	14H	12D UPPER
			34W	58H	24D LOWER
R1	34W	68H	34W	40H	12D UPPER
			34W	28H	24D LOWER
L2	56W	36H	56W	40H	12D
R2	34W	36H	34W	40H	12D
L3	40W	68H	40W	40H	12D UPPER
			40W	28H	24D LOWER
R3	40W	68H	40W	40H	12D UPPER
			40W	28H	24D LOWER
B1/B2	20W	28H	20W	28H	24D
B3	38W	23H	38W	23H	10D

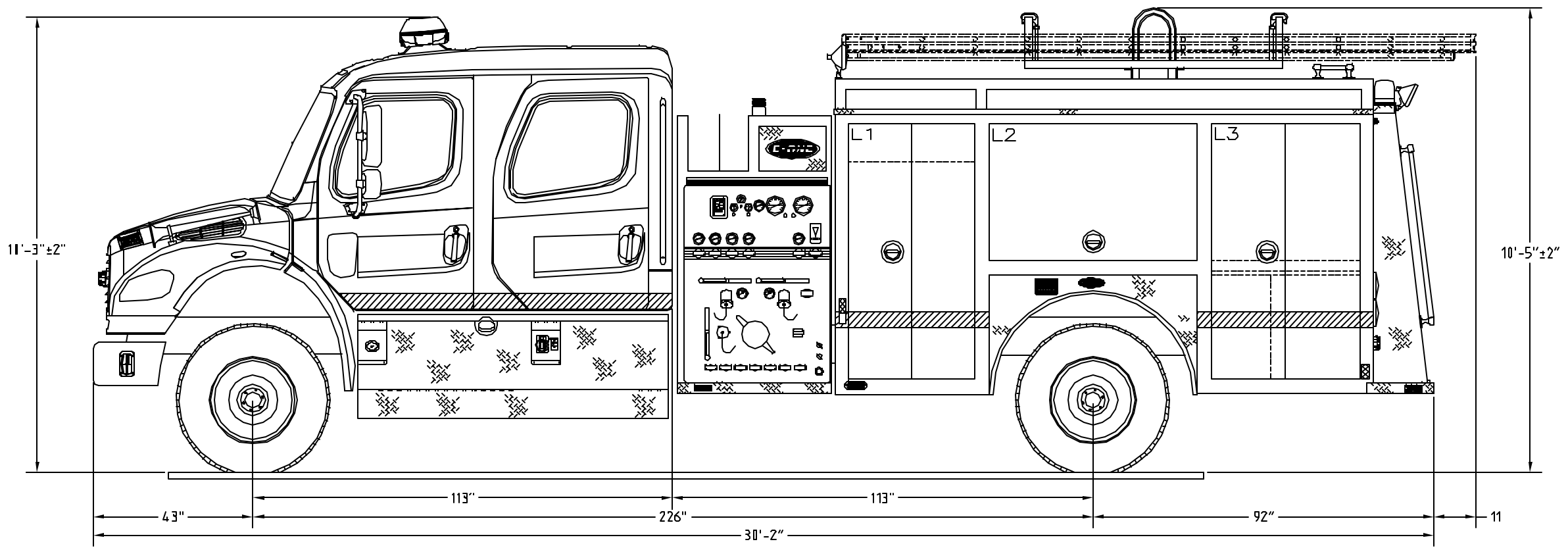
THIS DRAWING IS FOR REFERENCE PURPOSES. ALL DIMENSIONS ARE SUBJECT TO MINOR VARIATIONS DUE TO MANUFACTURING PROCESSES

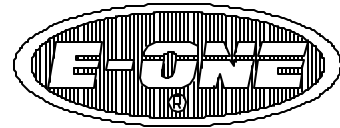
This print is the property of Emergency One, Inc. and is loaned to you subject to return on demand, unless otherwise agreed to in writing by Emergency One, Inc. Its contents are confidential and must not be copied or submitted to third parties for use or examination.



CROSSLAY HEIGHT:
 (FOR REFERENCE ONLY)
 TO RUNNING BOARD: 57"
 TO GROUND: 81"

HOSEBED HEIGHT:
 (FOR REFERENCE ONLY)
 TO TAILBOARD: 64"
 TO GROUND: 88"





E-ONE
OCALA, FL
SO.000000
VT04 TRADITION PUMPER
FREIGHTLINER M2 4DR

